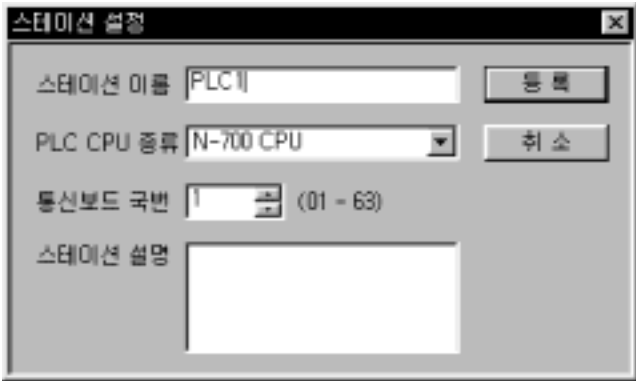




가 ,
 COM1, COM2, COM3, ..., COM32 .
 . 300, 600, 1200, 2400, 4800, 9600, 19200
 BPS .
 Parity, Data Bit, Stop Bit, Check Sum .

1. RS422/485 , RS232C 3 (Tx, Rx, GND) RTS/CTS Check .
2. PLC FARA N-Series PLC .
 PLC FARA N-Series PLC
 C.C.U DIP PLC



PLC CPU PLC CPU . CPU N-70, N-700, N-7000

PLC 1 - 63



PLC

PLC



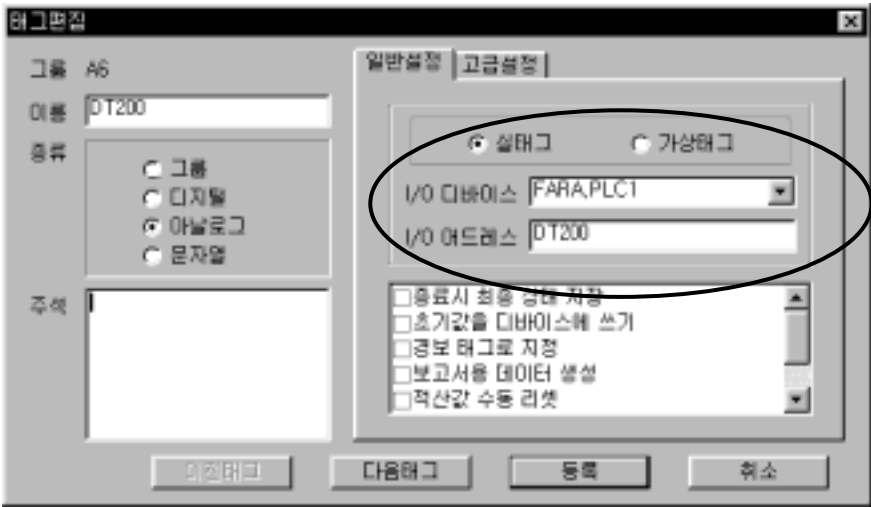
PLC . ()

(16 Bit)
 1 100 가 .
 , 0.0 999.9
 가 .

가

		BIT	WORD
(X)		X0000 – X255F	WX0000 – WX0255
(Y)		Y0000 – Y255F	WY0000 – WY0255
(R)		R0000 – R910F	WR0000 – WR0910
(L)		L0000 – L639F	WL0000 – WL0639
(T)		T0000 – T0255	
(C)		C0000 – C0255	
(DT)			DT0000 – DT9999
(FL)			FL00000 – FL32764
(LD)			LD0000 – LD8447
/	(SV)		SV0000 – SV0255
/	(EV)		EV0000 – EV0255

1. 가 . (T C
 BIT 가 .)
2. DT, FL, LD
 가 .
3. X, T, C 가 .



1. BIT

X0041, Y007D PLC

2. WORD

DT0012.3 : DT0012 4 Bit
FL0012.12 : FL0012 13 Bit

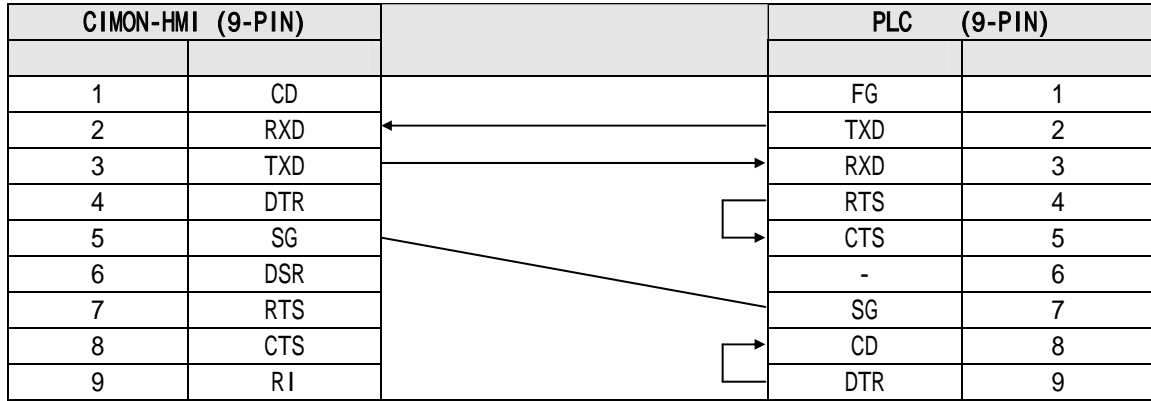
3. Bit

4. WORD

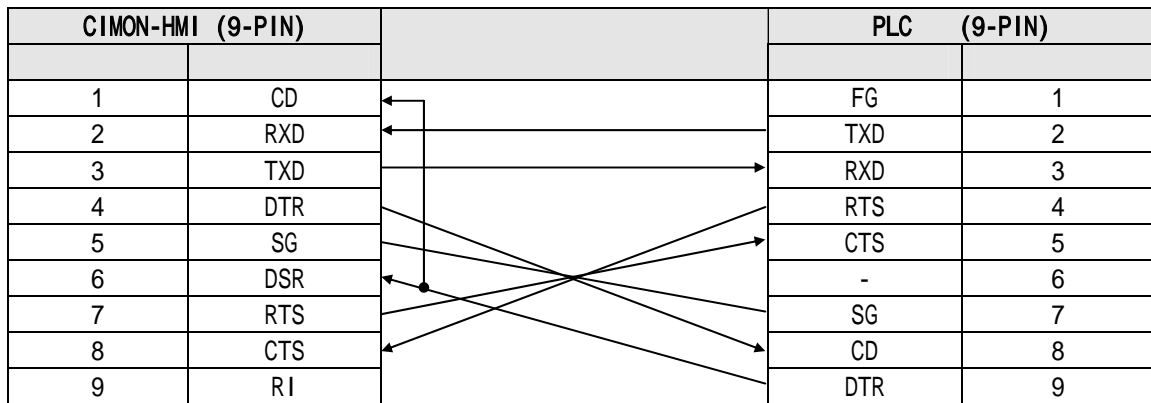
DT0021, FL0123 PLC

RS-232C

1. RTS/CTS



2. RTS/CTS



1. PLC

PLC [C.C.U DIP]

	SW										
	1	2	3	4	5	6	7	8			
DSW	0	0	0							2400 bps	
	1	0	0							19,200 bps	
	0	1	0							9,600 bps	
	1	1	0							4,800 bps	
	0	0	1							2,400 bps	
	1	0	1							1,200 bps	
	0	1	1							600 bps	
	1	1	1							300 bps	
				0							7 Bits
				1							8 Bits
					0						
					1						
						0					Odd Parity (奇數)
						1					Even Parity (偶數)
							0				1 Bit
							1				2 Bits
									0		CTS/CD
									1		CTS/CD

(ON 1, OFF 0)

MEMO